

CD3D Rabbit mAb

Catalog No.: A9770 **Recombinant**

Basic Information

Catalog No.

A9770

Observed MW

23kDa

Calculated MW

19kDa

Category

Primary antibody

Applications

WB,IF,FC

Cross-Reactivity

Human, Mouse, Rat

Recommended Dilutions

WB	1:500 - 1:2000
IF	1:50 - 1:200
FC	1:50 - 1:200

Contact

 | www.abclonal.com

Background

The protein encoded by this gene is part of the T-cell receptor/CD3 complex (TCR/CD3 complex) and is involved in T-cell development and signal transduction. The encoded membrane protein represents the delta subunit of the CD3 complex, and along with four other CD3 subunits, binds either TCR alpha/beta or TCR gamma/delta to form the TCR/CD3 complex on the surface of T-cells. Defects in this gene are a cause of severe combined immunodeficiency autosomal recessive T-cell-negative/B-cell-positive/NK-cell-positive (SCIDBNK). Two transcript variants encoding different isoforms have been found for this gene. Other variants may also exist, but the full-length natures of their transcripts has yet to be defined. [provided by RefSeq, Feb 2009]

Immunogen Information

Gene ID	Swiss Prot
915	P04234

Immunogen

A synthetic peptide corresponding to a sequence within amino acids 72-171 of human CD3D (P04234).

Synonyms

CD3-DELTA; IMD19; T3D

Product Information

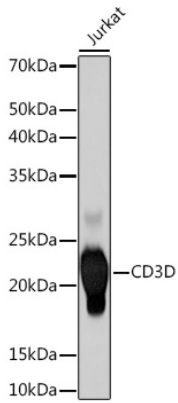
Source	Isotype	Purification
Rabbit	IgG	Affinity purification

Storage

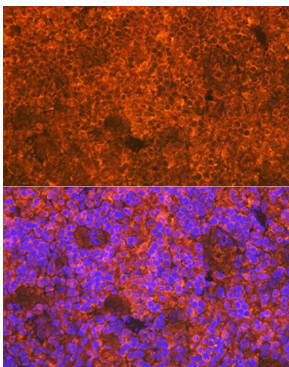
Store at -20°C. Avoid freeze / thaw cycles.

Buffer: PBS with 0.02% sodium azide,0.05% BSA,50% glycerol,pH7.3.

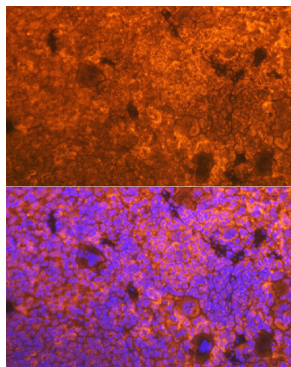
Validation Data



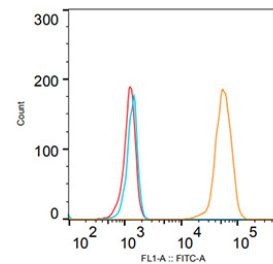
Western blot analysis of extracts of Jurkat cells, using CD3D Rabbit mAb (A9770) at 1:500 dilution. Secondary antibody: HRP Goat Anti-Rabbit IgG (H+L) (AS014) at 1:10000 dilution. Lysates/proteins: 25ug per lane. Blocking buffer: 3% nonfat dry milk in TBST. Detection: ECL Basic Kit (RM00020). Exposure time: 60s.



Immunofluorescence analysis of rat spleen using CD3D Rabbit mAb (A9770) at dilution of 1:100 (40x lens). Blue: DAPI for nuclear staining.

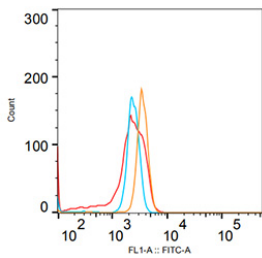


Immunofluorescence analysis of mouse spleen using CD3D Rabbit mAb (A9770) at dilution of 1:100 (40x lens). Blue: DAPI for nuclear staining.



Sample Name	Subset Name	Count
03-JURKAT-CD3D fcs	Single Cells	4491
03-JURKAT-AC fcs	Single Cells	2785
03-JurkatA1 fcs	Single Cells	3270

Flow cytometry: Jurkat cells were stained with Rabbit IgG isotype control (AC042, 2.5 ug/ml, blue line) or CD3D Rabbit mAb (A9770, 2.5 ug/ml orange line), followed by goat anti-Rabbit pAb FITC (1:200 dilution) staining. Non-fluorescently stained Jurkat cells was used as blank control (red line).



Sample Name	Subset Name	Count
03-RAJI-CD3D fcs	Single Cells	2988
03-RAJI-AC fcs	Single Cells	3289
03-RAJI-A1 fcs	Single Cells	5428

Flow cytometry: Raji cells were stained with Rabbit IgG isotype control (AC042, 2.5 ug/ml, blue line) or CD3D Rabbit mAb (A9770, 2.5 ug/ml orange line), followed by goat anti-Rabbit pAb FITC (1:200 dilution) staining. Non-fluorescently stained Raji cells was used as blank control (red line).