

# Integrin alpha 5 (ITGA5/CD49e) Rabbit mAb

Catalog No.: A19069

Recombinant

2 Publications

## Basic Information

### Observed MW

17kDa/150kDa

### Calculated MW

150kDa

### Category

Primary antibody

### Applications

WB,IHC,IP,FC,IF/ICC

### Cross-Reactivity

Human, Mouse, Rat

### CloneNo number

ARC0370

## Recommended Dilutions

<b>WB</b>	1:500 - 1:2000
<b>IHC</b>	1:50 - 1:200
<b>IP</b>	1:50 - 1:200
<b>FC</b>	1:50 - 1:200
<b>IF/ICC</b>	1:50 - 1:200

## Contact

 | [www.abclonal.com](http://www.abclonal.com)

## Background

The product of this gene belongs to the integrin alpha chain family. Integrins are heterodimeric integral membrane proteins composed of an alpha subunit and a beta subunit that function in cell surface adhesion and signaling. The encoded preproprotein is proteolytically processed to generate light and heavy chains that comprise the alpha 5 subunit. This subunit associates with the beta 1 subunit to form a fibronectin receptor. This integrin may promote tumor invasion, and higher expression of this gene may be correlated with shorter survival time in lung cancer patients. Note that the integrin alpha 5 and integrin alpha V subunits are encoded by distinct genes. [provided by RefSeq, Oct 2015]

## Immunogen Information

<b>Gene ID</b>	<b>Swiss Prot</b>
3678	P08648

### Immunogen

A synthetic peptide corresponding to a sequence within amino acids 950-1049 of human Integrin alpha 5 (ITGA5/CD49e) (P08648).

### Synonyms

CD49e;FNRA;VLA-5;VLA5A;Integrin alpha 5;ITGA5

## Product Information

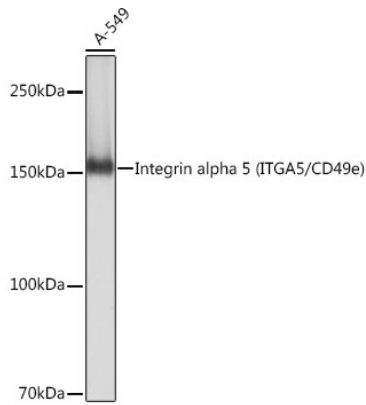
<b>Source</b>	<b>Isotype</b>	<b>Purification</b>
Rabbit	IgG	Affinity purification

### Storage

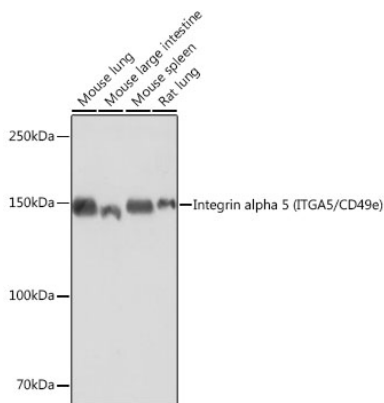
Store at -20°C. Avoid freeze / thaw cycles.

Buffer: PBS with 0.01% thiomersal,0.05% BSA,50% glycerol,pH7.3.

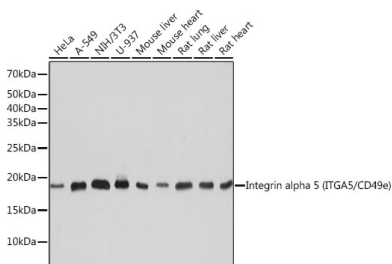
## Validation Data



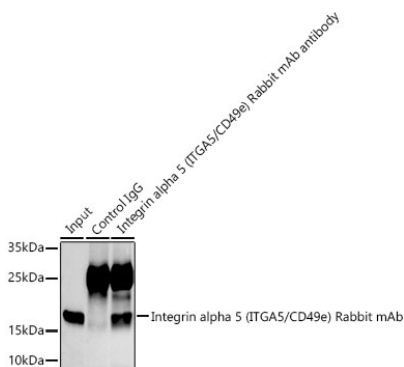
Western blot analysis of extracts of A-549 cells, using Integrin alpha 5 (ITGA5/CD49e) (ITGA5/CD49e) antibody (A19069) at 1:1000 dilution.  
 Secondary antibody: HRP Goat Anti-Rabbit IgG (H+L) (AS014) at 1:10000 dilution.  
 Lysates/proteins: 25ug per lane.  
 Blocking buffer: 3% nonfat dry milk in TBST.  
 Detection: ECL Basic Kit (RM00020).  
 Exposure time: 1s.



Western blot analysis of extracts of various cell lines, using Integrin alpha 5 (ITGA5/CD49e) (ITGA5/CD49e) antibody (A19069) at 1:1000 dilution.  
 Secondary antibody: HRP Goat Anti-Rabbit IgG (H+L) (AS014) at 1:10000 dilution.  
 Lysates/proteins: 25ug per lane.  
 Blocking buffer: 3% nonfat dry milk in TBST.  
 Detection: ECL Basic Kit (RM00020).  
 Exposure time: 10s.

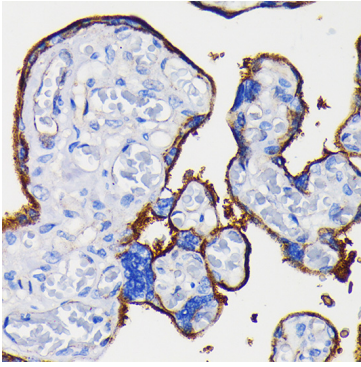


Western blot analysis of extracts of various cell lines, using Integrin alpha 5 (ITGA5/CD49e) (ITGA5/CD49e) antibody (A19069) at 1:1000 dilution.  
 Secondary antibody: HRP Goat Anti-Rabbit IgG (H+L) (AS014) at 1:10000 dilution.  
 Lysates/proteins: 25ug per lane.  
 Blocking buffer: 3% nonfat dry milk in TBST.  
 Detection: ECL Basic Kit (RM00020).  
 Exposure time: 1s.

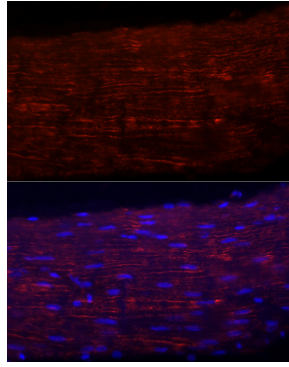


Immunoprecipitation analysis of 300ug extracts of A549 cells using 3ug Integrin alpha 5 (ITGA5/CD49e) antibody (A19069). Western blot was performed from the immunoprecipitate using Integrin alpha 5 (ITGA5/CD49e) antibody (A19069) at a dilution of 1:1000.

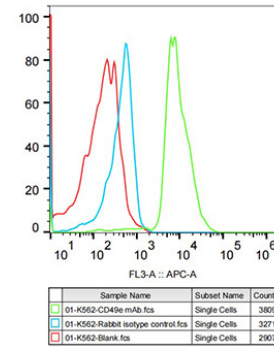
## Validation Data



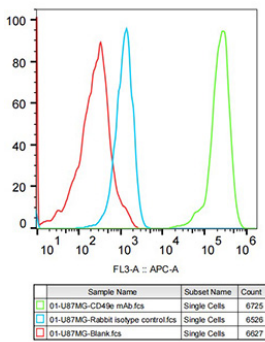
Immunohistochemistry of paraffin-embedded human placenta using Integrin alpha 5 (ITGA5/CD49e) (ITGA5/CD49e) Rabbit mAb (A19069) at dilution of 1:100 (40x lens). Perform microwave antigen retrieval with 10 mM PBS buffer pH 7.2 before commencing with IHC staining protocol.



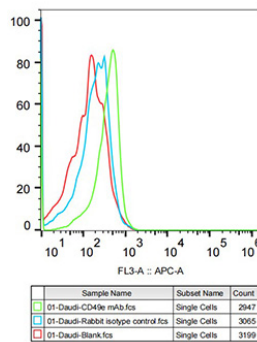
Immunofluorescence analysis of Rat colon using CTSC antibody (A19069) at dilution of 1:100 (40x lens). Blue: DAPI for nuclear staining.



Flow cytometry: K562 cells were stained with Rabbit IgG isotype control (AC042, 5 ug/ml, blue line) or Integrin alpha 5 (ITGA5/CD49e) Rabbit mAb (A19069, 5 ug/ml green line), followed by Alexa Fluor 647 conjugated goat anti-rabbit pAb(1:600 dilution) staining. Non-fluorescently stained K562 cells were used as blank control (red line).



Flow cytometry: U-87MG cells were stained with Rabbit IgG isotype control (AC042, 5 ug/ml, blue line) or Integrin alpha 5 (ITGA5/CD49e) Rabbit mAb (A19069, 5 ug/ml green line), followed by Alexa Fluor 647 conjugated goat anti-rabbit pAb(1:600 dilution) staining. Non-fluorescently stained U-87MG cells were used as blank control (red line).



Flow cytometry: Daudi cells were stained with Rabbit IgG isotype control (AC042, 5 ug/ml, blue line) or Integrin alpha 5 (ITGA5/CD49e) Rabbit mAb (A19069, 5 ug/ml green line), followed by Alexa Fluor 647 conjugated goat anti-rabbit pAb(1:600 dilution) staining. Non-fluorescently stained Daudi cells were used as blank control (red line).