

CD55 Rabbit mAb

Catalog No.: A11283 **Recombinant**

Basic Information

Observed MW

78kDa

Calculated MW

55-80kDa

Category

Primary antibody

Applications

WB,IHC

Cross-Reactivity

Human

CloneNo number

ARC0568

Recommended Dilutions

WB	1:500 - 1:2000
IHC	1:50 - 1:200

Contact

 | www.abclonal.com

Background

This gene encodes a glycoprotein involved in the regulation of the complement cascade. Binding of the encoded protein to complement proteins accelerates their decay, thereby disrupting the cascade and preventing damage to host cells. Antigens present on this protein constitute the Cromer blood group system (CROM). Alternative splicing results in multiple transcript variants. The predominant transcript variant encodes a membrane-bound protein, but alternatively spliced transcripts may produce soluble proteins. [provided by RefSeq, Jul 2014]

Immunogen Information

Gene ID	Swiss Prot
1604	P08174

Immunogen

A synthetic peptide corresponding to a sequence within amino acids 50-150 of human CD55 (P08174).

Synonyms

CR; CROM; DAF; TC

Product Information

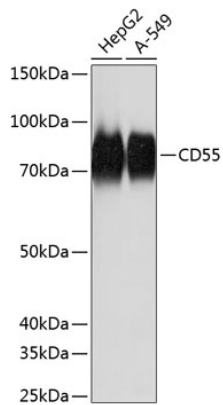
Source	Isotype	Purification
Rabbit	IgG	Affinity purification

Storage

Store at -20°C. Avoid freeze / thaw cycles.

Buffer: PBS with 0.01% thiomersal,0.05% BSA,50% glycerol,pH7.3.

Validation Data



Western blot analysis of extracts of various cell lines, using CD55 Rabbit mAb (A11283) at 1: 1000 dilution.

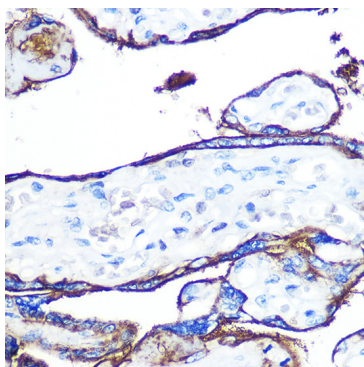
Secondary antibody: HRP Goat Anti-Rabbit IgG (H+L) (AS014) at 1:10000 dilution.

Lysates/proteins: 25ug per lane.

Blocking buffer: 3% nonfat dry milk in TBST.

Detection: ECL Basic Kit (RM00020).

Exposure time: 3s.



Immunohistochemistry of paraffin-embedded human placenta using CD55 Rabbit mAb (A11283) at dilution of 1:100 (40x lens). Perform microwave antigen retrieval with 10 mM PBS buffer pH 7.2 before commencing with IHC staining protocol.