

# Integrin beta 3 (ITGB3/CD61) Rabbit mAb

Catalog No.: A19073

Recombinant

3 Publications

## Basic Information

### Observed MW

110kDa

### Calculated MW

110kDa

### Category

Primary antibody

### Applications

WB,IHC,IP,FC

### Cross-Reactivity

Human, Mouse, Rat

### CloneNo number

ARC0460

## Recommended Dilutions

<b>WB</b>	1:500 - 1:2000
<b>IHC</b>	1:50 - 1:200
<b>IP</b>	1:50 - 1:200
<b>FC</b>	1:50 - 1:200

## Contact

 | [www.abclonal.com](http://www.abclonal.com)

## Background

The ITGB3 protein product is the integrin beta chain beta 3. Integrins are integral cell-surface proteins composed of an alpha chain and a beta chain. A given chain may combine with multiple partners resulting in different integrins. Integrin beta 3 is found along with the alpha IIb chain in platelets. Integrins are known to participate in cell adhesion as well as cell-surface mediated signalling. [provided by RefSeq, Jul 2008]

## Immunogen Information

### Gene ID

3690

### Swiss Prot

P05106

### Immunogen

A synthetic peptide corresponding to a sequence within amino acids 689-788 of human Integrin beta 3 (ITGB3/CD61) (P05106).

### Synonyms

BDPLT16;BDPLT2;CD61;GP3A;GPIIIa;GT;Integrin beta 3;ITGB3

## Product Information

### Source

Rabbit

### Isotype

IgG

### Purification

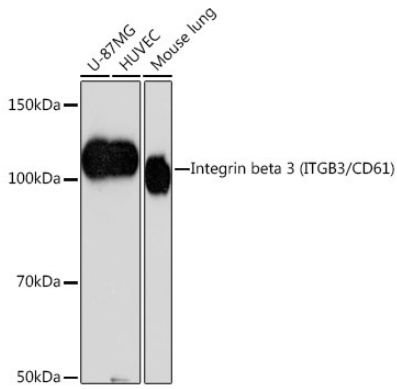
Affinity purification

### Storage

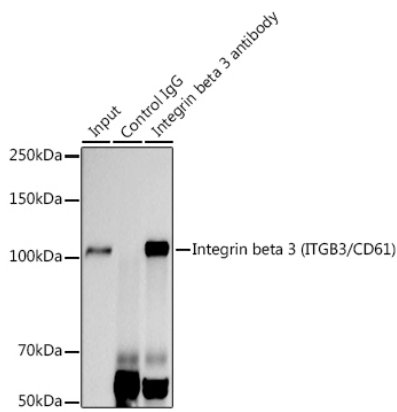
Store at -20°C. Avoid freeze / thaw cycles.

Buffer: PBS with 0.01% thiomersal,0.05% BSA,50% glycerol,pH7.3.

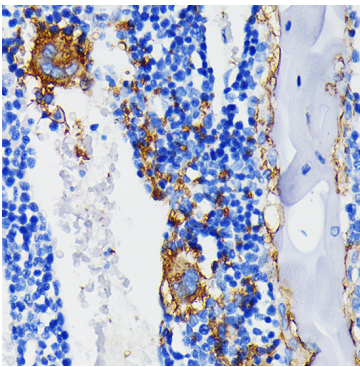
## Validation Data



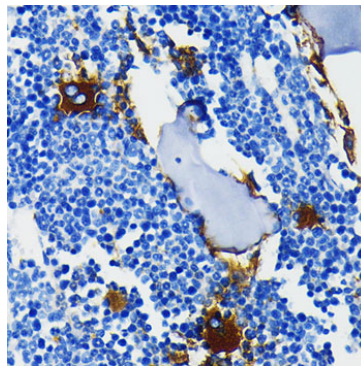
Western blot analysis of extracts of various cell lines, using Integrin beta 3 (ITGB3/CD61) (ITGB3/CD61) antibody (A19073) at 1:1000 dilution.  
 Secondary antibody: HRP Goat Anti-Rabbit IgG (H+L) (AS014) at 1:10000 dilution.  
 Lysates/proteins: 25ug per lane.  
 Blocking buffer: 3% nonfat dry milk in TBST.  
 Detection: ECL Basic Kit (RM00020).  
 Exposure time: 90s.



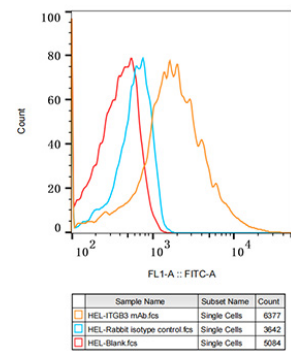
Immunoprecipitation analysis of 300ug extracts of U-87MG cells using 3ug Integrin beta 3 (ITGB3/CD61) antibody (A19073). Western blot was performed from the immunoprecipitate using Integrin beta 3 (ITGB3/CD61) antibody (A19073) at a dilution of 1:1000.



Immunohistochemistry of paraffin-embedded rat bone marrow using Integrin beta 3 (ITGB3/CD61) (ITGB3/CD61) Rabbit mAb (A19073) at dilution of 1:100 (40x lens). Perform microwave antigen retrieval with 10 mM PBS buffer pH 7.2 before commencing with IHC staining protocol.



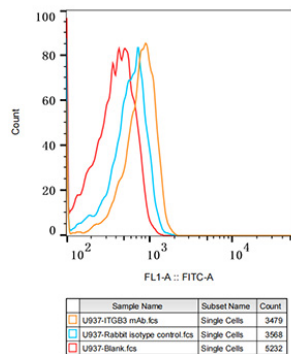
Immunohistochemistry of paraffin-embedded mouse bone marrow using Integrin beta 3 (ITGB3/CD61) (ITGB3/CD61) Rabbit mAb (A19073) at dilution of 1:100 (40x lens). Perform microwave antigen retrieval with 10 mM PBS buffer pH 7.2 before commencing with IHC staining protocol.



Flow cytometry: HEL cells were stained with Rabbit IgG isotype control (AC042, 2.5 ug/ml, blue line) or Integrin beta 3 (ITGB3/CD61) Rabbit mAb (A19073, 2.5 ug/ml orange line), followed by FITC conjugated goat anti-rabbit pAb (1:200 dilution) staining. Non-fluorescently stained HEL cells were used as blank control (red line).

## Validation Data

---



Flow cytometry: U937 cells were stained with Rabbit IgG isotype control (AC042, 2.5 ug/ml, blue line) or Integrin beta 3 (ITGB3/CD61) Rabbit mAb (A19073, 2.5 ug/ml orange line), followed by FITC conjugated goat anti-rabbit pAb (1:200 dilution). Non-fluorescently stained U937 cells were used as blank control (red line).