

CD4 Rabbit mAb

Catalog No.: A19018 **Recombinant**

Basic Information

Catalog No.

A19018

Observed MW

55kDa

Calculated MW

55kDa

Category

Primary antibody

Applications

WB,IHC,FC

Cross-Reactivity

Human

Recommended Dilutions

| | |
|------------|----------------|
| WB | 1:500 - 1:2000 |
| IHC | 1:50 - 1:200 |
| FC | 1:50 - 1:200 |

Contact

 | www.abclonal.com

Background

This gene encodes a membrane glycoprotein of T lymphocytes that interacts with major histocompatibility complex class II antigens and is also a receptor for the human immunodeficiency virus. This gene is expressed not only in T lymphocytes, but also in B cells, macrophages, and granulocytes. It is also expressed in specific regions of the brain. The protein functions to initiate or augment the early phase of T-cell activation, and may function as an important mediator of indirect neuronal damage in infectious and immune-mediated diseases of the central nervous system. Multiple alternatively spliced transcript variants encoding different isoforms have been identified in this gene. [provided by RefSeq, Aug 2010]

Immunogen Information

| | |
|----------------|-------------------|
| Gene ID | Swiss Prot |
| 920 | P01730 |

Immunogen

Recombinant fusion protein containing a sequence corresponding to amino acids 216-396 of human CD4 (P01730).

Synonyms

CD4;CD4mut

Product Information

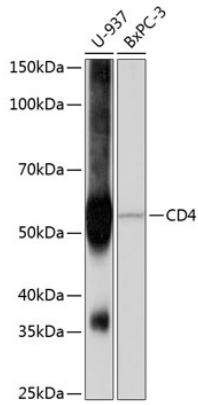
| | | |
|---------------|----------------|-----------------------|
| Source | Isotype | Purification |
| Rabbit | IgG | Affinity purification |

Storage

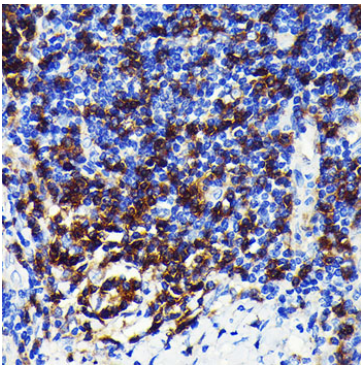
Store at -20°C. Avoid freeze / thaw cycles.

Buffer: PBS with 0.02% sodium azide,0.05% BSA,50% glycerol,pH7.3.

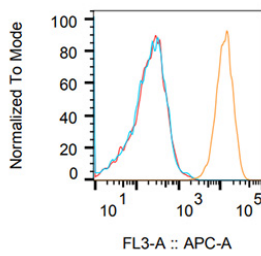
Validation Data



Western blot analysis of extracts of various cell lines, using CD4 antibody (A19018) at 1:1000 dilution. Secondary antibody: HRP Goat Anti-Rabbit IgG (H+L) (AS014) at 1:10000 dilution. Lysates/proteins: 25ug per lane. Blocking buffer: 3% nonfat dry milk in TBST. Detection: ECL Basic Kit (RM00020). Exposure time: 3min.

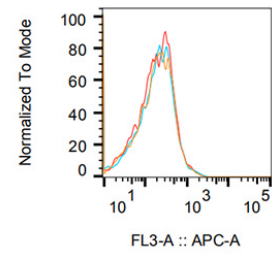


Immunohistochemistry of paraffin-embedded human lung cancer using CD4 Rabbit mAb (A19018) at dilution of 1:100 (40x lens). Perform microwave antigen retrieval with 10 mM PBS buffer pH 7.2 before commencing with IHC staining protocol.



| Sample Name | Subset Name | Count |
|---------------------------|--------------|-------|
| THP1-CD4 mAb.fcs | Single Cells | 7597 |
| THP1-negative control.fcs | Single Cells | 8441 |
| THP1-blank.fcs | Single Cells | 8691 |

Flow cytometry: THP-1 cells were stained with Rabbit IgG isotype control (AC042, 10 ug/ml, blue line) or CD4 Rabbit mAb (A19018, 10 ug/ml orange line), followed by goat anti-Rabbit pAb Alexa Fluor 647 (1:500 dilution) staining. Non-fluorescently stained THP-1 cells was used as blank control (red line).



| Sample Name | Subset Name | Count |
|---------------------------|--------------|-------|
| K562-CD4 mAb.fcs | Single Cells | 5793 |
| K562-negative control.fcs | Single Cells | 5357 |
| K562-blank.fcs | Single Cells | 5771 |

Flow cytometry: K-562 cells were stained with Rabbit IgG isotype control (AC042, 10 ug/ml, blue line) or CD4 Rabbit mAb (A19018, 10 ug/ml orange line), followed by goat anti-Rabbit pAb Alexa Fluor 647 (1:500 dilution) staining. Non-fluorescently stained K-562 cells was used as blank control (red line).