

# CD11b/ITGAM Rabbit mAb

Catalog No.: A19010

Recombinant

1 Publications

## Basic Information

### Observed MW

170kDa

### Calculated MW

170kDa

### Category

Primary antibody

### Applications

WB,IHC,FC

### Cross-Reactivity

Human

### CloneNo number

ARC0414

## Recommended Dilutions

<b>WB</b>	1:500 - 1:2000
<b>IHC</b>	1:50 - 1:200
<b>FC</b>	1:50 - 1:200

## Contact

 | [www.abclonal.com](http://www.abclonal.com)

## Background

This gene encodes the integrin alpha M chain. Integrins are heterodimeric integral membrane proteins composed of an alpha chain and a beta chain. This I-domain containing alpha integrin combines with the beta 2 chain (ITGB2) to form a leukocyte-specific integrin referred to as macrophage receptor 1 ('Mac-1'), or inactivated-C3b (iC3b) receptor 3 ('CR3'). The alpha M beta 2 integrin is important in the adherence of neutrophils and monocytes to stimulated endothelium, and also in the phagocytosis of complement coated particles. Multiple transcript variants encoding different isoforms have been found for this gene. [provided by RefSeq, Mar 2009]

## Immunogen Information

<b>Gene ID</b>	<b>Swiss Prot</b>
3684	P11215

### Immunogen

A synthetic peptide corresponding to a sequence within amino acids 1053-1152 of human CD11b/ITGAM (P11215).

### Synonyms

CD11B;CR3A;MAC-1;MAC1A;MO1A;SLEB6;ITGAM;CD11b/ITAM

## Product Information

<b>Source</b>	<b>Isotype</b>	<b>Purification</b>
Rabbit	IgG	Affinity purification

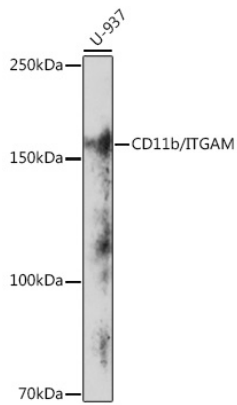
### Storage

Store at -20°C. Avoid freeze / thaw cycles.

Buffer: PBS with 0.01% thiomersal,0.05% BSA,50% glycerol,pH7.3.

## Validation Data

---



Western blot analysis of extracts of U-937 cells, using CD11b/ITGAM antibody (A19010) at 1:1000 dilution.

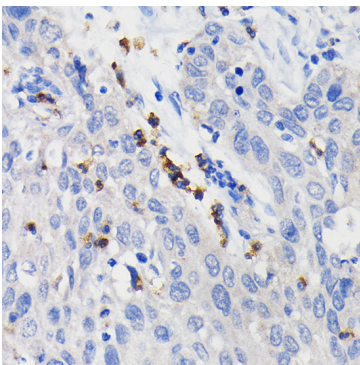
Secondary antibody: HRP Goat Anti-Rabbit IgG (H+L) (AS014) at 1:10000 dilution.

Lysates/proteins: 25ug per lane.

Blocking buffer: 3% nonfat dry milk in TBST.

Detection: ECL Enhanced Kit (RM00021).

Exposure time: 3min.



Immunohistochemistry of paraffin-embedded human lung cancer using CD11b/ITGAM Rabbit mAb (A19010) at dilution of 1:100 (40x lens). Perform microwave antigen retrieval with 10 mM PBS buffer pH 7.2 before commencing with IHC staining protocol.