

[KO Validated] Integrin alpha 2 (ITGA2/CD49b) Rabbit pAb

Catalog No.: A7629 **KO** **Validated** **2 Publications**

Basic Information

Catalog No.

A7629

Observed MW

150kDa

Calculated MW

129kDa

Category

Primary antibody

Applications

WB, IHC, IF

Cross-Reactivity

Human, Mouse, Rat

Recommended Dilutions

WB	1:500 - 1:2000
IHC	1:100 - 1:200
IF	1:50 - 1:200

Contact

 | www.abclonal.com

Background

This gene encodes the alpha subunit of a transmembrane receptor for collagens and related proteins. The encoded protein forms a heterodimer with a beta subunit and mediates the adhesion of platelets and other cell types to the extracellular matrix. Loss of the encoded protein is associated with bleeding disorder platelet-type 9. Antibodies against this protein are found in several immune disorders, including neonatal alloimmune thrombocytopenia. This gene is located adjacent to a related alpha subunit gene. Alternative splicing results in multiple transcript variants.

Immunogen Information

Gene ID	Swiss Prot
3673	P17301

Immunogen

Recombinant protein of human Integrin alpha 2 (ITGA2/CD49b)

Synonyms

BR;CD49B;GPIa;HPA-5;VLA-2;VLAA2;ITGA2

Product Information

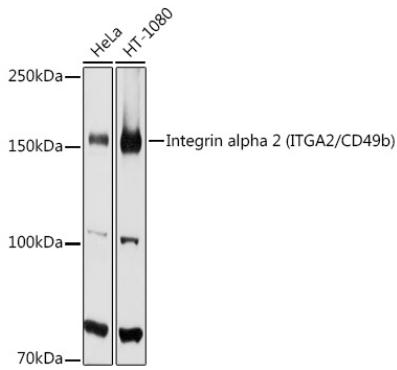
Source	Isotype	Purification
Rabbit	IgG	Affinity purification

Storage

Store at -20°C. Avoid freeze / thaw cycles.

Buffer: PBS with 0.02% sodium azide,50% glycerol,pH7.3.

Validation Data



Western blot analysis of extracts of various cell lines, using Integrin alpha 2 (ITGA2/CD49b) antibody (A7629) at 1:1000 dilution.

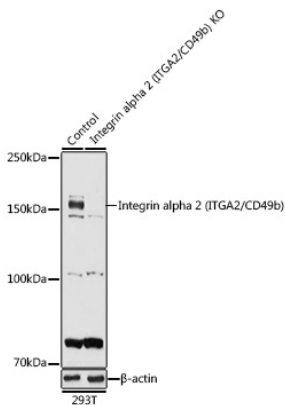
Secondary antibody: HRP Goat Anti-Rabbit IgG (H+L) (AS014) at 1:10000 dilution.

Lysates/proteins: 25ug per lane.

Blocking buffer: 3% nonfat dry milk in TBST.

Detection: ECL Basic Kit (RM00020).

Exposure time: 90s.



Western blot analysis of extracts from normal (control) and Integrin alpha 2 (ITGA2/CD49b) knockout (KO) 293T cells, using Integrin alpha 2 (ITGA2/CD49b) antibody (A7629) at 1:1000 dilution.

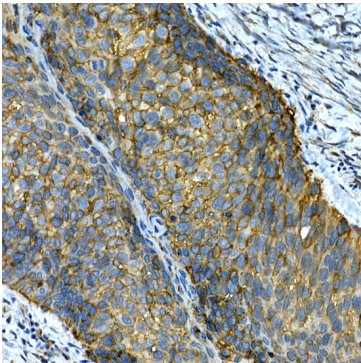
Secondary antibody: HRP Goat Anti-Rabbit IgG (H+L) (AS014) at 1:10000 dilution.

Lysates/proteins: 25ug per lane.

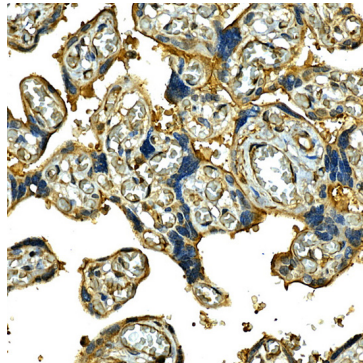
Blocking buffer: 3% nonfat dry milk in TBST.

Detection: ECL Basic Kit (RM00020).

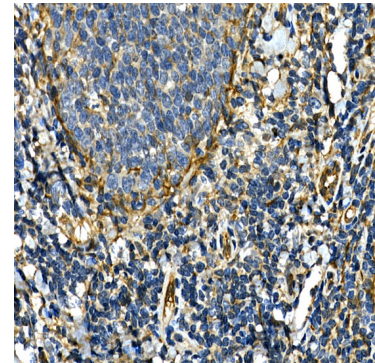
Exposure time: 90s.



Immunohistochemistry of paraffin-embedded human lung cancer using [KO Validated] Integrin alpha 2 (ITGA2/CD49b) Rabbit pAb (A7629) at dilution of 1:50 (40x lens). Perform high pressure antigen retrieval with 10 mM citrate buffer pH 6.0 before commencing with IHC staining protocol.

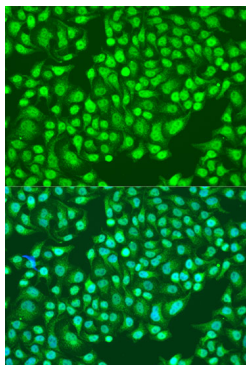


Immunohistochemistry of paraffin-embedded human placenta using [KO Validated] Integrin alpha 2 (ITGA2/CD49b) Rabbit pAb (A7629) at dilution of 1:50 (40x lens). Perform high pressure antigen retrieval with 10 mM citrate buffer pH 6.0 before commencing with IHC staining protocol.



Immunohistochemistry of paraffin-embedded human tonsil using [KO Validated] Integrin alpha 2 (ITGA2/CD49b) Rabbit pAb (A7629) at dilution of 1:50 (40x lens). Perform high pressure antigen retrieval with 10 mM citrate buffer pH 6.0 before commencing with IHC staining protocol.

Validation Data



Immunofluorescence analysis of U2OS cells using Integrin alpha 2 (ITGA2/CD49b) antibody (A7629) at dilution of 1:100. Blue: DAPI for nuclear staining.