

CD3E+CD3G Rabbit mAb

Catalog No.: A20213 **Recombinant**

Basic Information

Catalog No.

A20213

Observed MW

23kDa

Calculated MW

23kDa

Category

Primary antibody

Applications

WB,ELISA,FC,IF

Cross-Reactivity

Human

Recommended Dilutions

Elisa	1:500 - 1:2000
WB	1:500 - 1:2000
FC	1:50 - 1:200
IF	1:50 - 1:200

Contact

 | www.abclonal.com

Background

The protein encoded by this gene is the CD3-epsilon polypeptide, which together with CD3-gamma, -delta and -zeta, and the T-cell receptor alpha/beta and gamma/delta heterodimers, forms the T-cell receptor-CD3 complex. This complex plays an important role in coupling antigen recognition to several intracellular signal-transduction pathways. The genes encoding the epsilon, gamma and delta polypeptides are located in the same cluster on chromosome 11. The epsilon polypeptide plays an essential role in T-cell development. Defects in this gene cause immunodeficiency. This gene has also been linked to a susceptibility to type I diabetes in women. The protein encoded by this gene is the CD3-gamma polypeptide, which together with CD3-epsilon, -delta and -zeta, and the T-cell receptor alpha/beta and gamma/delta heterodimers, forms the T-cell receptor-CD3 complex. This complex plays an important role in coupling antigen recognition to several intracellular signal-transduction pathways. The genes encoding the epsilon, gamma and delta polypeptides are located in the same cluster on chromosome 11. Defects in this gene are associated with T cell immunodeficiency.

Immunogen Information

Gene ID

916/917

Swiss Prot

P07766/P09693

Immunogen

Recombinant protein of human CD3E+CD3G .

Synonyms

CD3E;IMD18;T3E;TCRE;CD3e molecule;CD3G;CD3-GAMMA;IMD17;T3G

Product Information

Source

Rabbit

Isotype

IgG

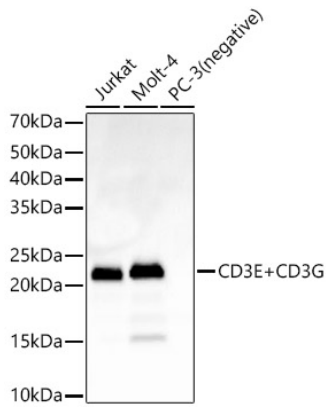
Purification

Affinity purification

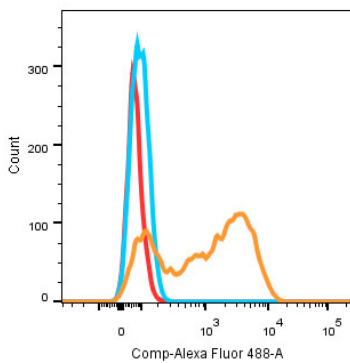
Storage

Store at -20°C. Avoid freeze / thaw cycles.
Buffer: PBS with 0.02% thimerosal,pH7.3.

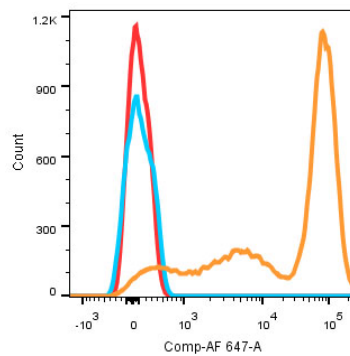
Validation Data



Western blot analysis of various lysates, using CD3E+CD3G antibody (A20213) at 1:2500 dilution.
Secondary antibody: HRP Goat Anti-Rabbit IgG (H+L) (AS014) at 1:10000 dilution.
Lysates/proteins: 25ug per lane.
Blocking buffer: 3% nonfat dry milk in TBST.
Detection: ECL Basic Kit (RM00020).
Exposure time: 60s.



Flow cytometric analysis of CD3E+CD3G Rabbit mAb (A20213) (1ug/ml) in Jurkats cells (orange) compare to rabbit IgG Isotype control (blue) and non-staining control (Red).



Human peripheral blood lymphocytes stained with CD3E+CD3G Rabbit mAb (A20213) (1ug/ml) (orange). Secondary antibody only staining (Blue) and unstained sample (red) were used as a control.