

CD27 Rabbit mAb

Catalog No.: A11505 **Recombinant**

Basic Information

Observed MW

55kDa

Calculated MW

55kDa

Category

Primary antibody

Applications

WB,IF/ICC

Cross-Reactivity

Human, Rat

CloneNo number

ARC0625

Recommended Dilutions

WB	1:500 - 1:2000
IF/ICC	1:50 - 1:200

Contact

 | www.abclonal.com

Background

The protein encoded by this gene is a member of the TNF-receptor superfamily. This receptor is required for generation and long-term maintenance of T cell immunity. It binds to ligand CD70, and plays a key role in regulating B-cell activation and immunoglobulin synthesis. This receptor transduces signals that lead to the activation of NF-kappaB and MAPK8/JNK. Adaptor proteins TRAF2 and TRAF5 have been shown to mediate the signaling process of this receptor. CD27-binding protein (SIVA), a proapoptotic protein, can bind to this receptor and is thought to play an important role in the apoptosis induced by this receptor. [provided by RefSeq, Jul 2008]

Immunogen Information

Gene ID	Swiss Prot
939	P26842

Immunogen

A synthetic peptide corresponding to a sequence within amino acids 1-100 of human CD27 (P26842).

Synonyms

S152; S152.LPFS2; T14; TNFRSF7; Tp55

Product Information

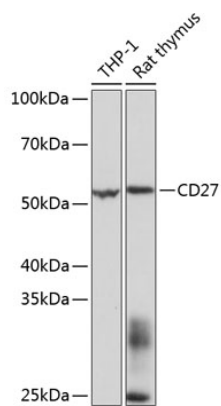
Source	Isotype	Purification
Rabbit	IgG	Affinity purification

Storage

Store at -20°C. Avoid freeze / thaw cycles.

Buffer: PBS with 0.01% thiomersal,0.05% BSA,50% glycerol,pH7.3.

Validation Data



Western blot analysis of extracts of various cell lines, using CD27 Rabbit mAb (A11505) at 1: 1000 dilution.

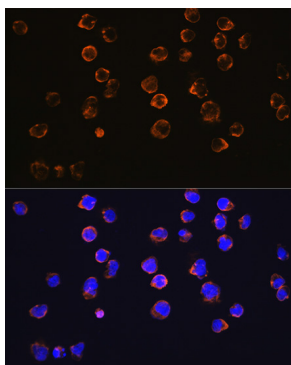
Secondary antibody: HRP Goat Anti-Rabbit IgG (H+L) (AS014) at 1:10000 dilution.

Lysates/proteins: 25ug per lane.

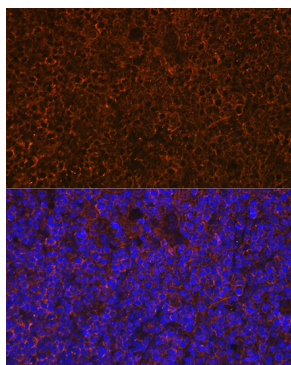
Blocking buffer: 3% nonfat dry milk in TBST.

Detection: ECL Basic Kit (RM00020).

Exposure time: 3s.



Immunofluorescence analysis of Jurkat cells using CD27 Rabbit mAb (A11505) at dilution of 1:100 (40x lens). Blue: DAPI for nuclear staining.



Immunofluorescence analysis of rat thymus using CD27 Rabbit mAb (A11505) at dilution of 1:100 (40x lens). Blue: DAPI for nuclear staining.